

Anj POE IP Cameras

Quick Start Guide

V1.1.1

Please download Anj camera product information at www.ipcam.xin.

Please read this manual carefully before using this product and keep it for future reference.

This manual is applies to our professional series IP cameras such as:

Bullet POE IP cameras

Dome POE IP cameras

PTZ POE IP cameras

The product does not contain CD, please download the “Anj camera” product information at www.ipcam.xin before operating the camera.

Recommended operating the IP camera according to the content below.

Content

1. About camera	3
2. Connect camera	4
3. View via PC	6
4. View via mobile phone	9
5. Micro SD card record and Cloud record	10
6. More info	12

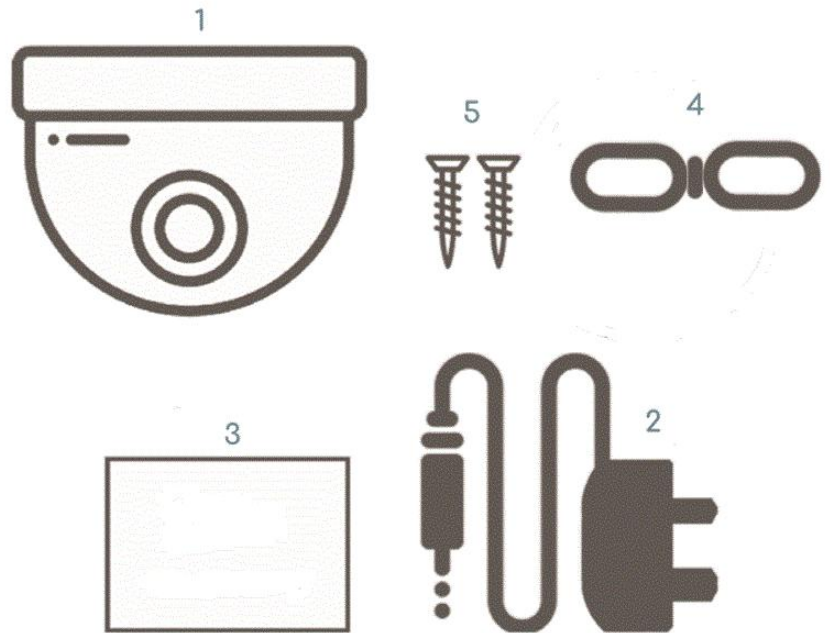
1. About camera

1.1 Product introduction.

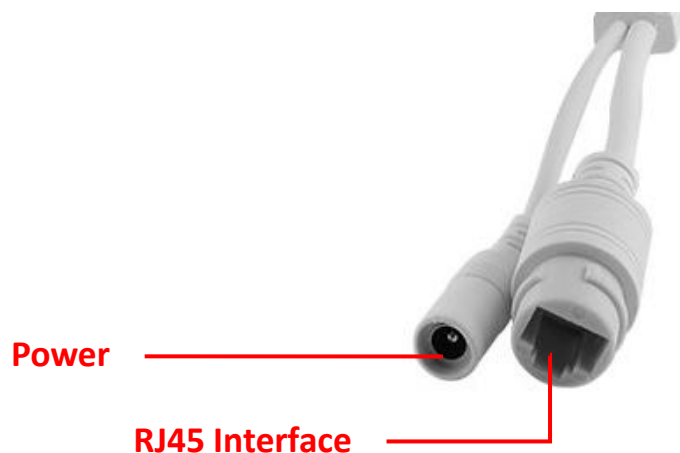
This is a digital HD IP camera for monitoring. It connects to the Internet to send and receive data, and you can use it to remotely view real-time images from your mobile phone, computer or other device anytime and anywhere, it can save surveillance videos in the Micro SD card, computer or other device such as an NVR, The camera also supports alarm functions such as sending alarm emails, alarming phone message push and other functions.

1.2 Product should contain:

- ① IP Camera
- ② Power adapter
- ③ User manual
- ④ Network cable
- ⑤ Screws bag



1.3 Product interface.



2. Connect camera

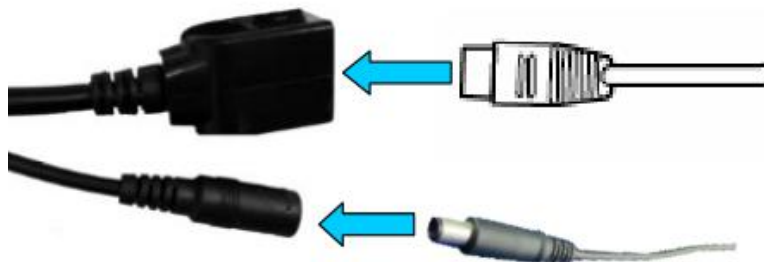
2.1 Connect network cable to router and plug in power adapter.



The router must be able to connect to the Internet!

Please use the standard power supply.

2.2 Connect LAN cable and power to camera, it needs about one minute to self checking and then start working.

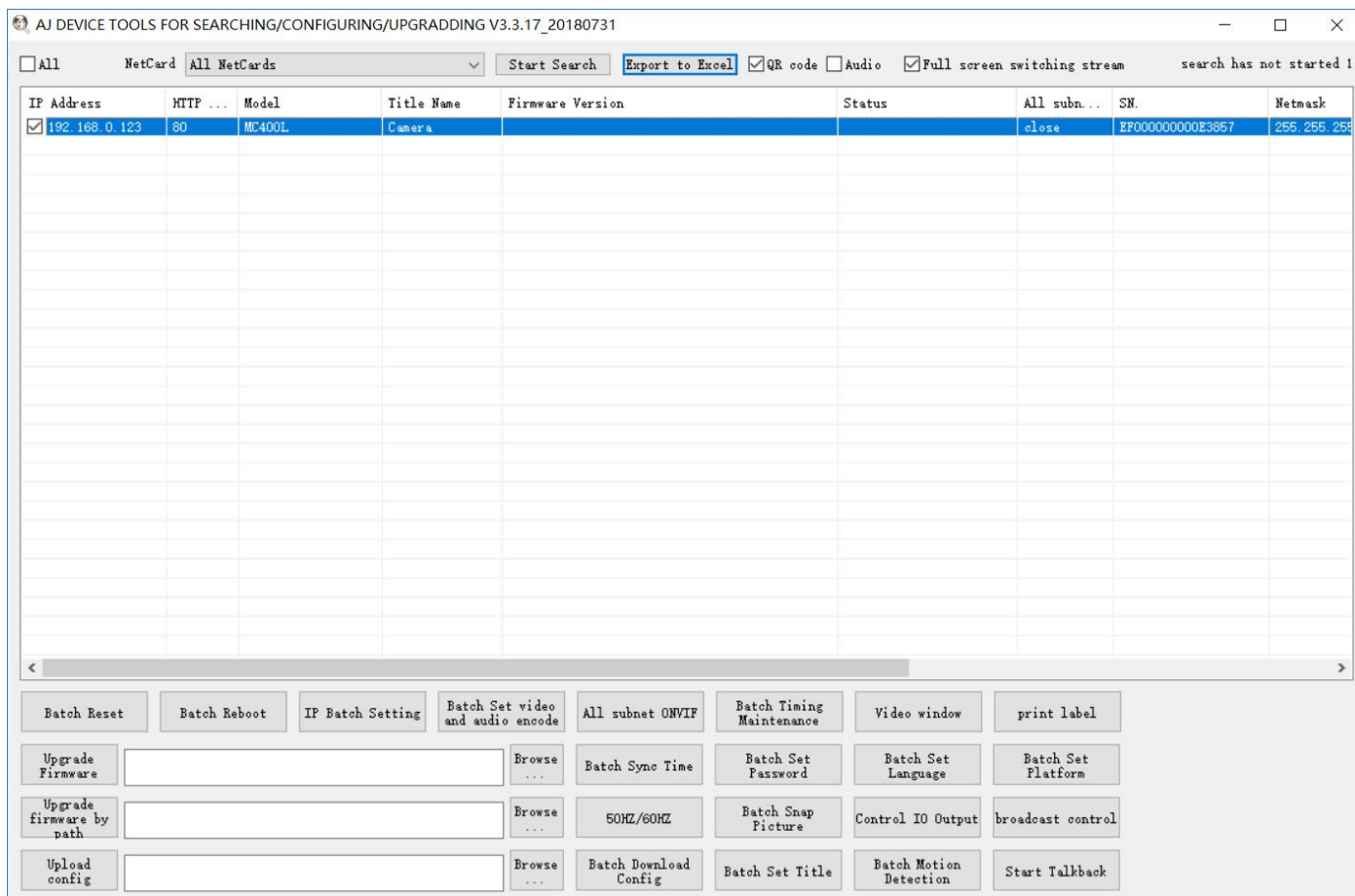


Network indicator light (green): always flashing means network data transmission is normal.

The camera supports POE, you can only connected the network cable form POE switch to the camera's RJ45 interface.

Quick Start Guide

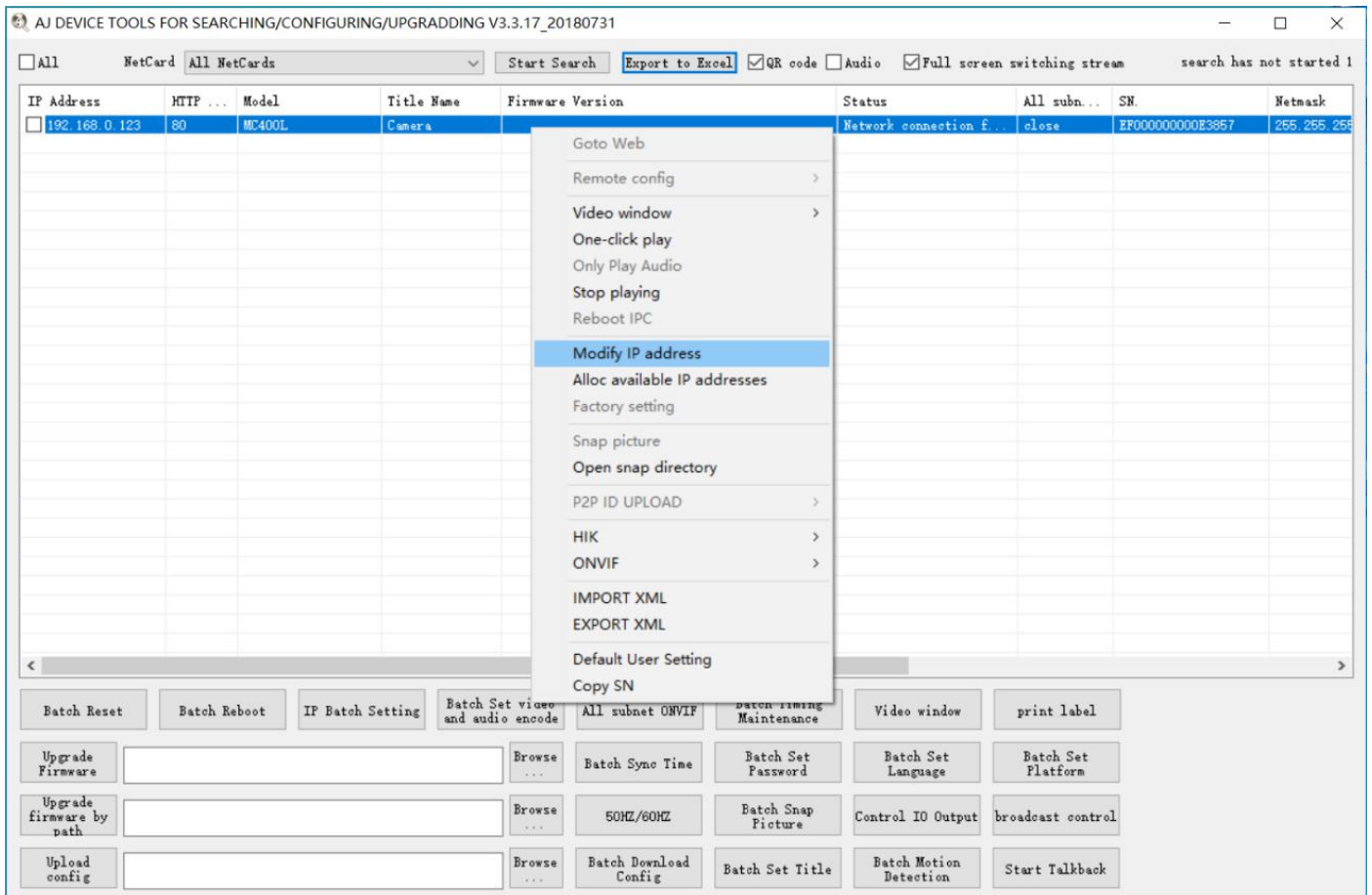
2.3 Install the “Device Tool” from the product information, then run it to find the cameras.



Device tool instructions are available in the product information.

2.4 Right click on the camera information and select "Modify IP Address" to modify the IP address of the camera.

Quick Start Guide



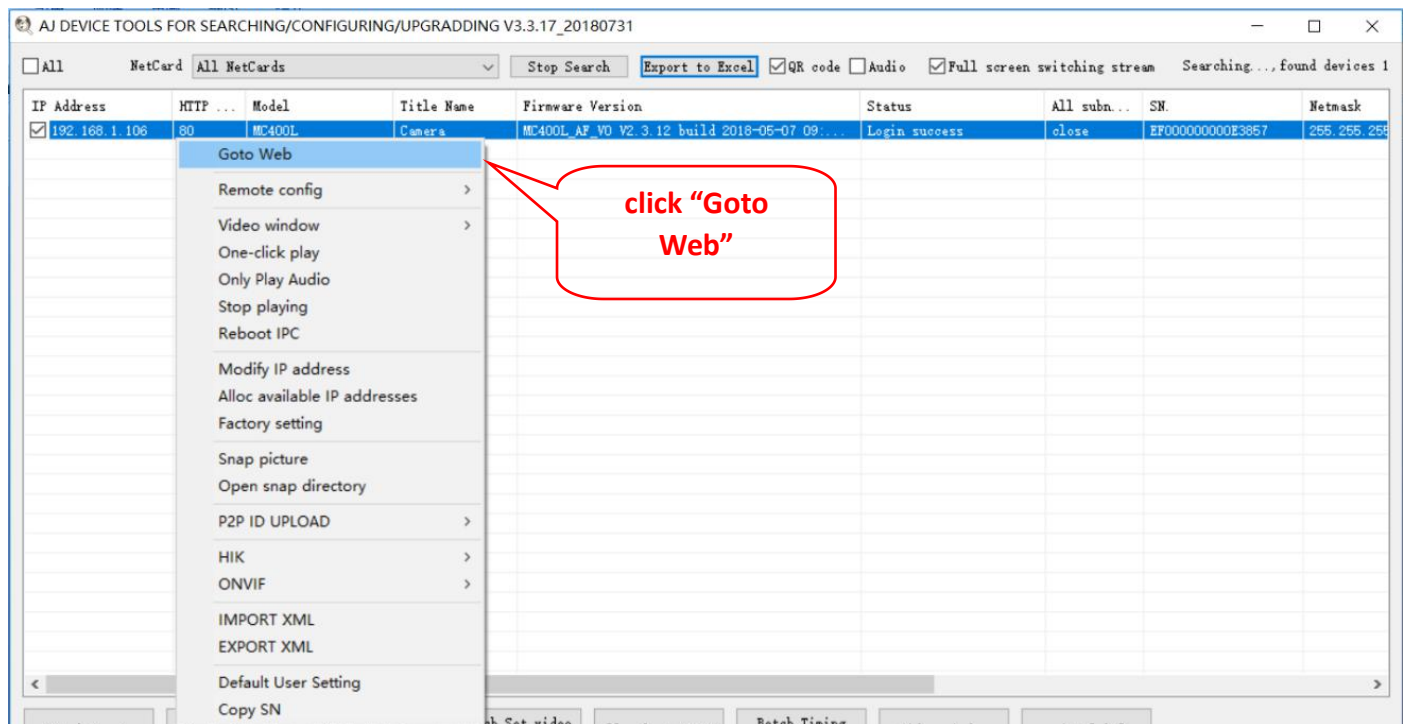
1. The default IP address of the camera is: 192.168.1.160.

2. The camera must be configured with the correct IP address to connect to the Internet. recommended to select the "DHCP" option and make sure your router has DHCP enabled.

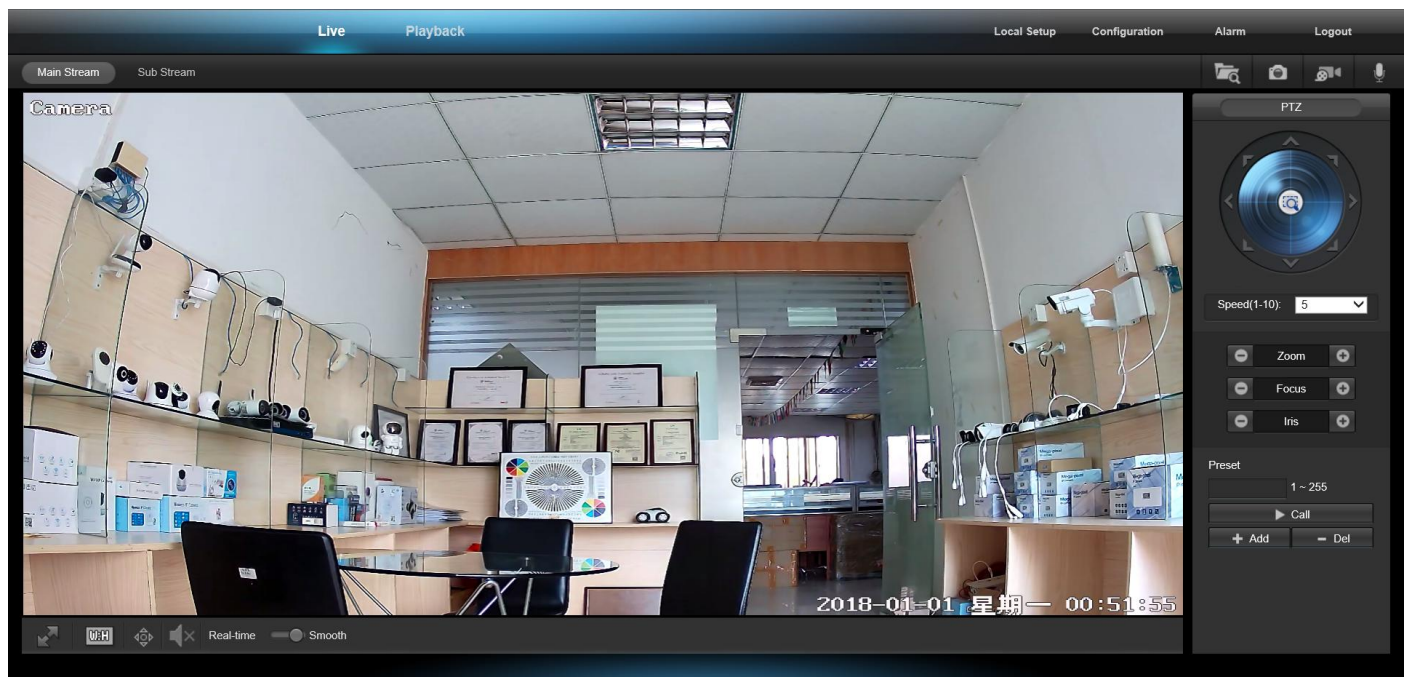
3. View via PC

4.1 Right click on the camera information and select "Goto Web".

Quick Start Guide



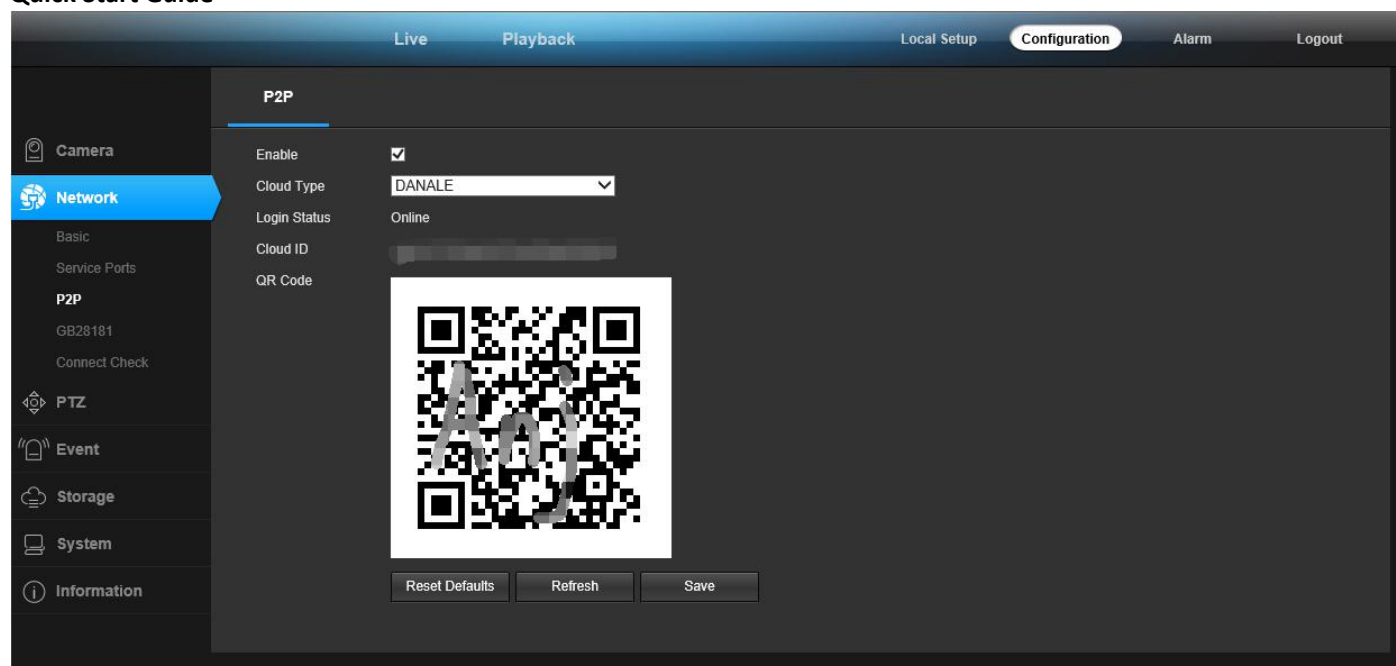
4.2 Access to the camera through IE browser on windows PC, In IE browser you can view image and configure all parameters of camera.



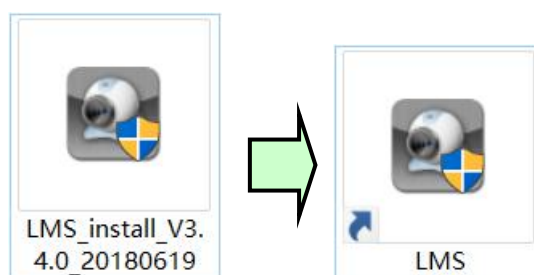
Default user name: admin Default password: 123456

In "Configuration" - "Network" - "p2p" page, you can open "Enable" and get the QR code for Danale APP.

Quick Start Guide

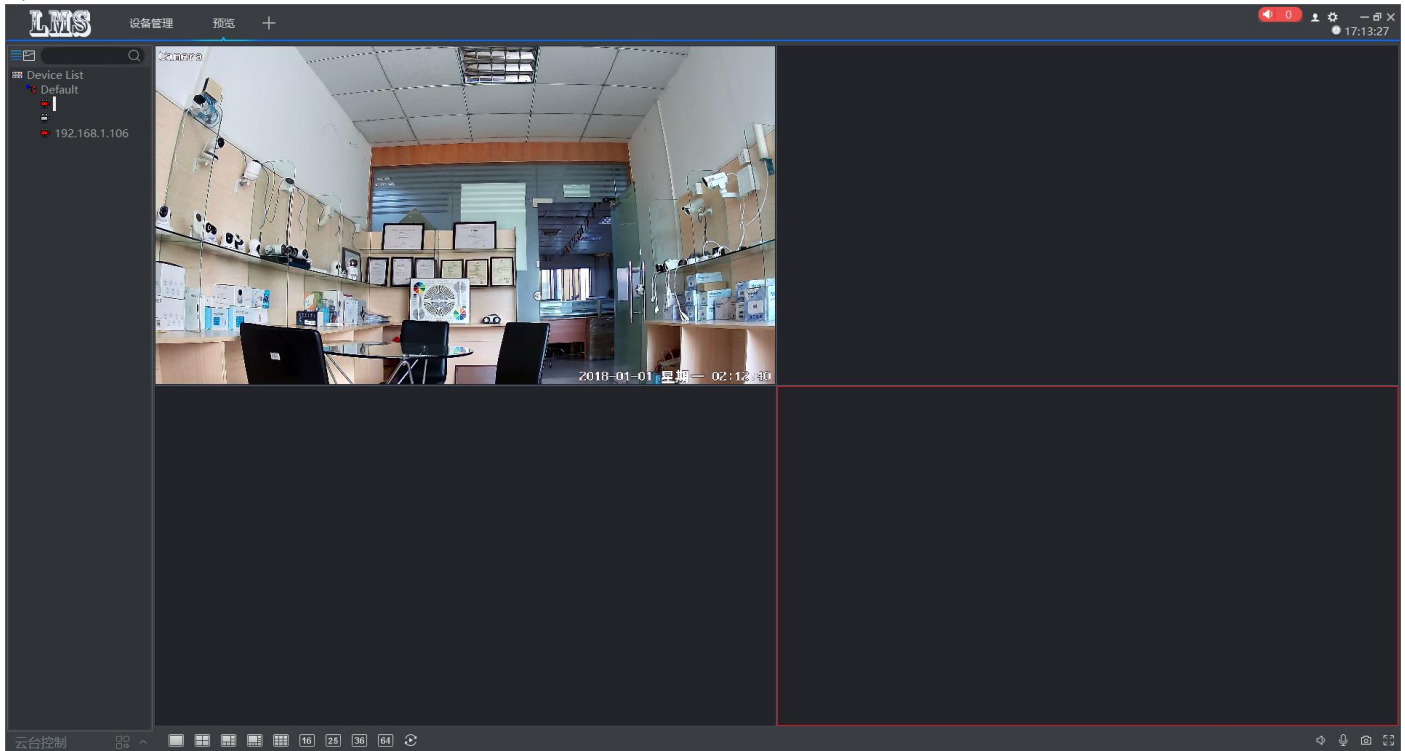


4.3 Install the “LMS_install” from the CD.



4.4 Connect and manage the multiple cameras via LMS on windows PC!

Quick Start Guide



LMS instructions are available in the product information.

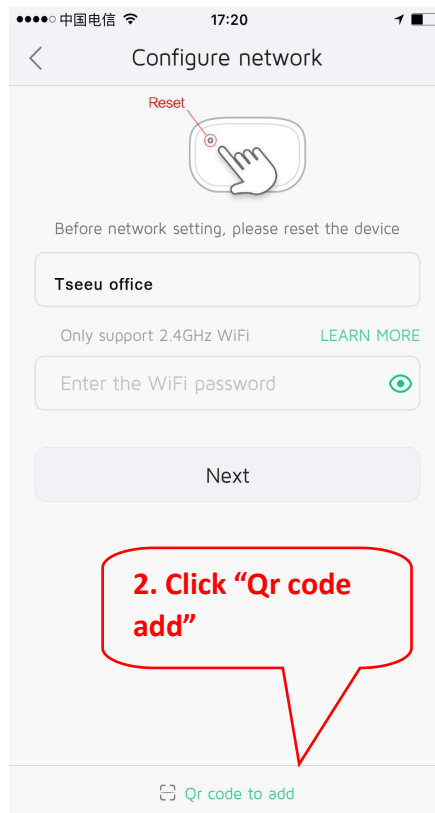
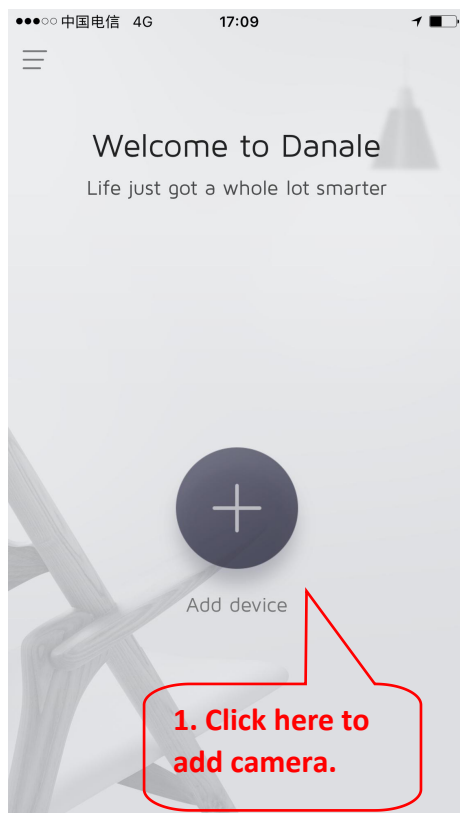
4. View via mobile phone

3.1 Download “Danale” from Google Play Store / Apple App Store or scan the QR code below to get APP information.

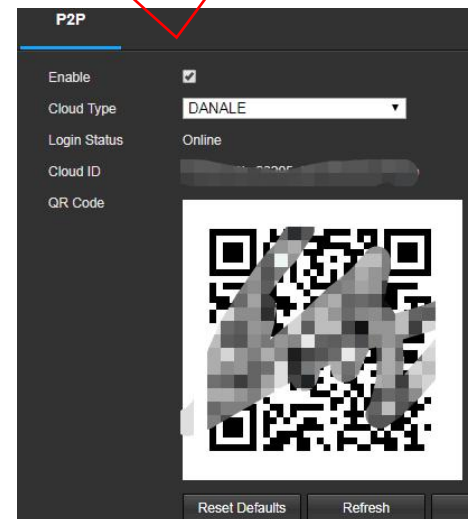


4.2 Run APP and Add Camera.

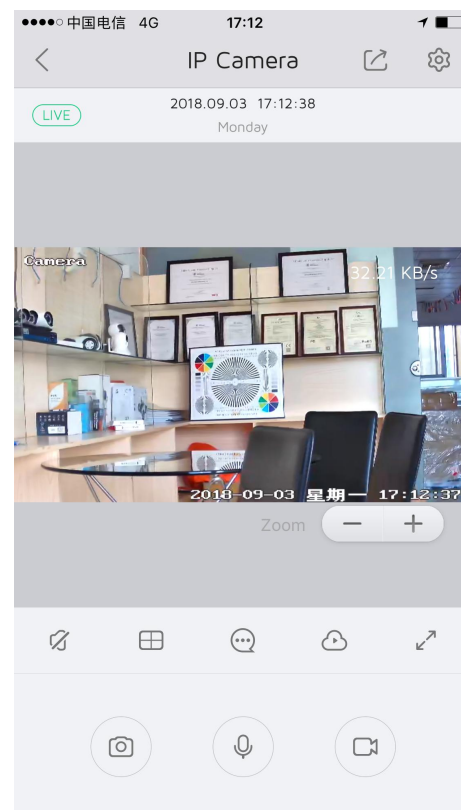
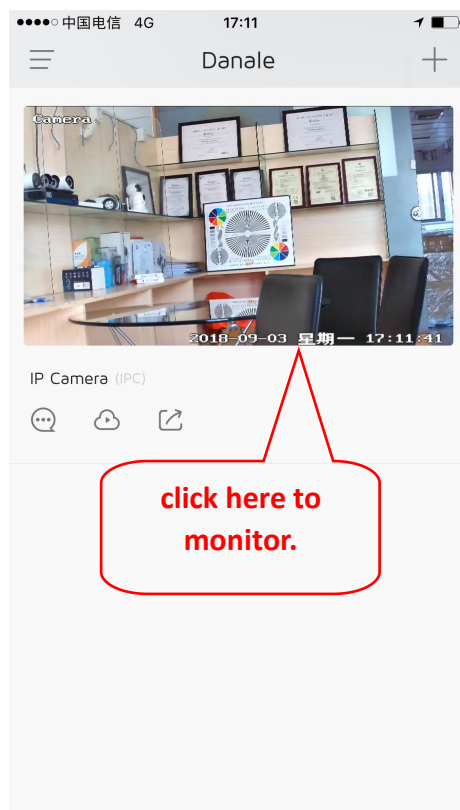
Quick Start Guide



3. Scanning the QR code on the camera's WEB, as shown below. you can find the operation by "3. View via PC"



3.3 After added the camera, click online camera to view real-time image.



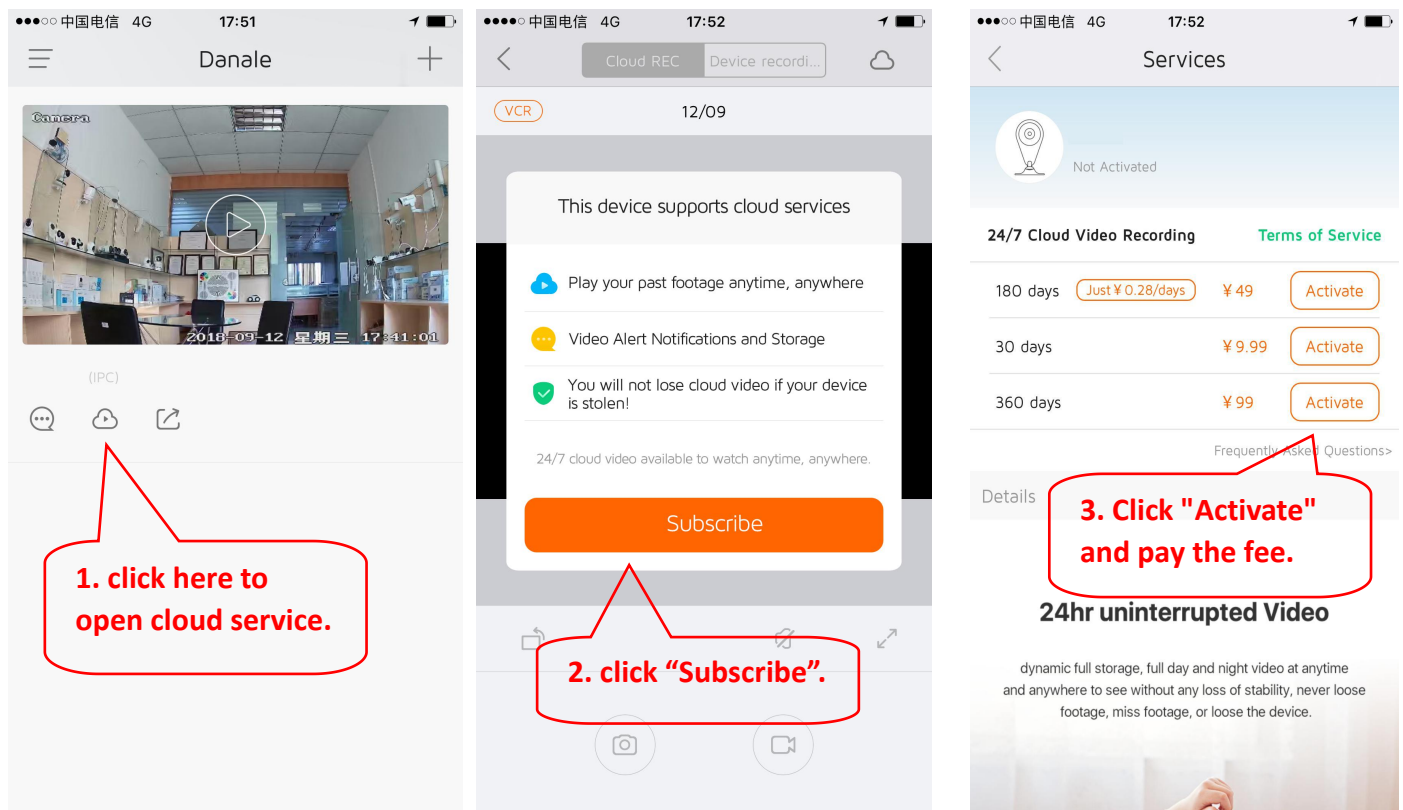
5. Micro SD card record and Cloud record

5.1 Find the camera Micro SD card installation tutorials in the AJ product information , install the Micro SD card to the camera.



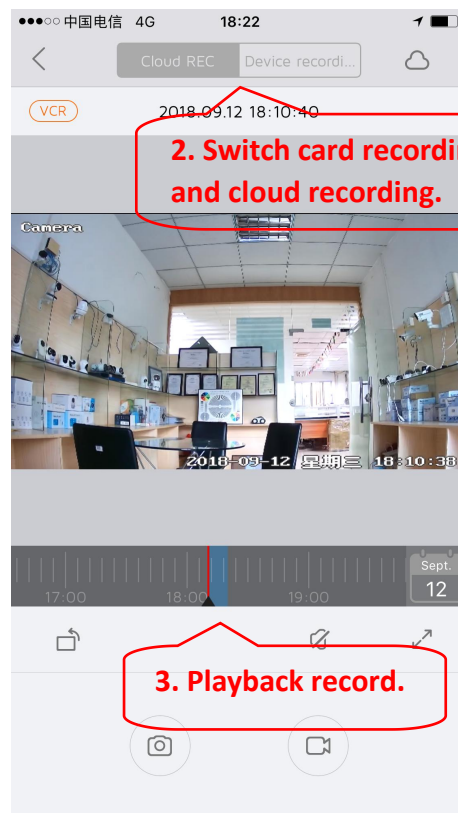
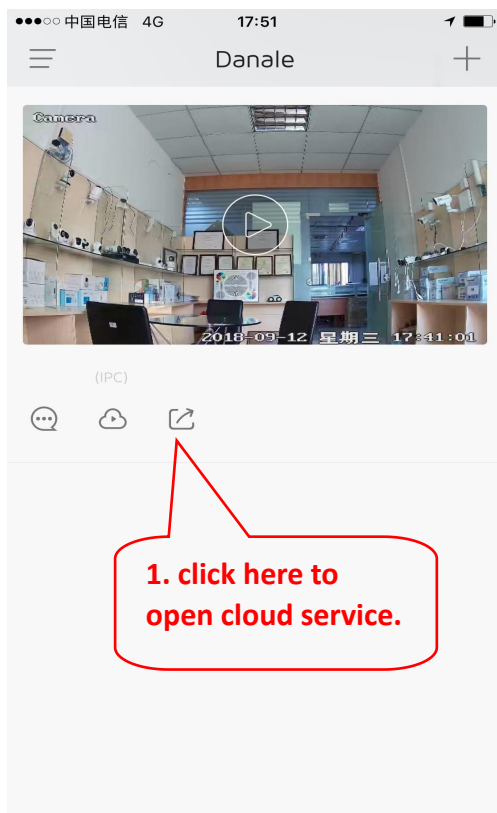
You can set up scheduled recording and alarm recording by IE browser to save your Micro SD card space.

5.1 Activate cloud service.



5.2 Playback record.

Quick Start Guide



6 More info

This manual is to help customers to know and use the camera quickly, For detailed instructions and video tutorials please refer to the content of Anj camera product information at www.ipcam.xin.

This manual may have descriptions and operations that do not match the product, If you have any questions or need technical support Please feel free to contact us or our dealers.