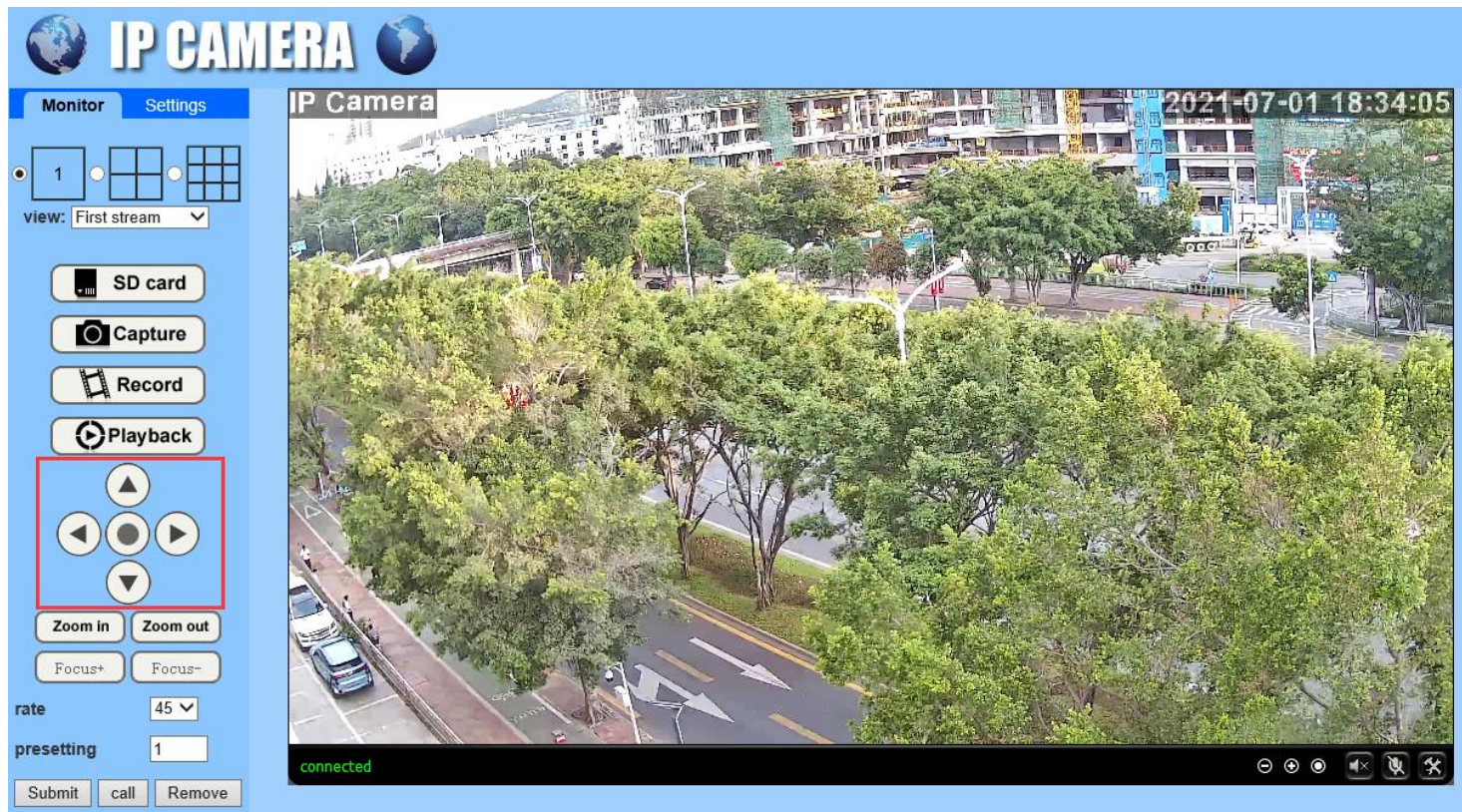


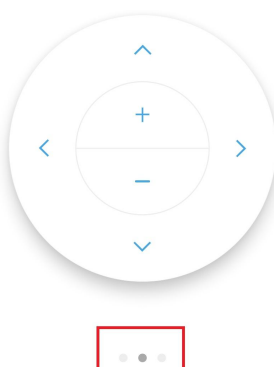
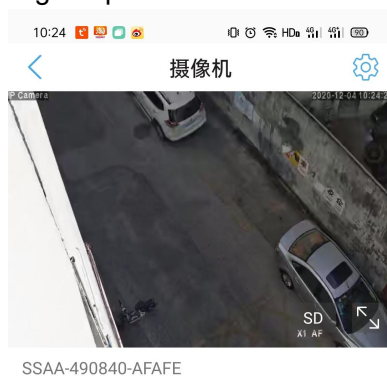
PTZ control operation instructions

Pan Tilt Rotation Control

Press the arrow keys in direction controlling interface, camera will be rotated as the direction of button, if release the button, camera will stop rotating, additionally, rotation speed can be adjusted by speed parameters, as shown below.

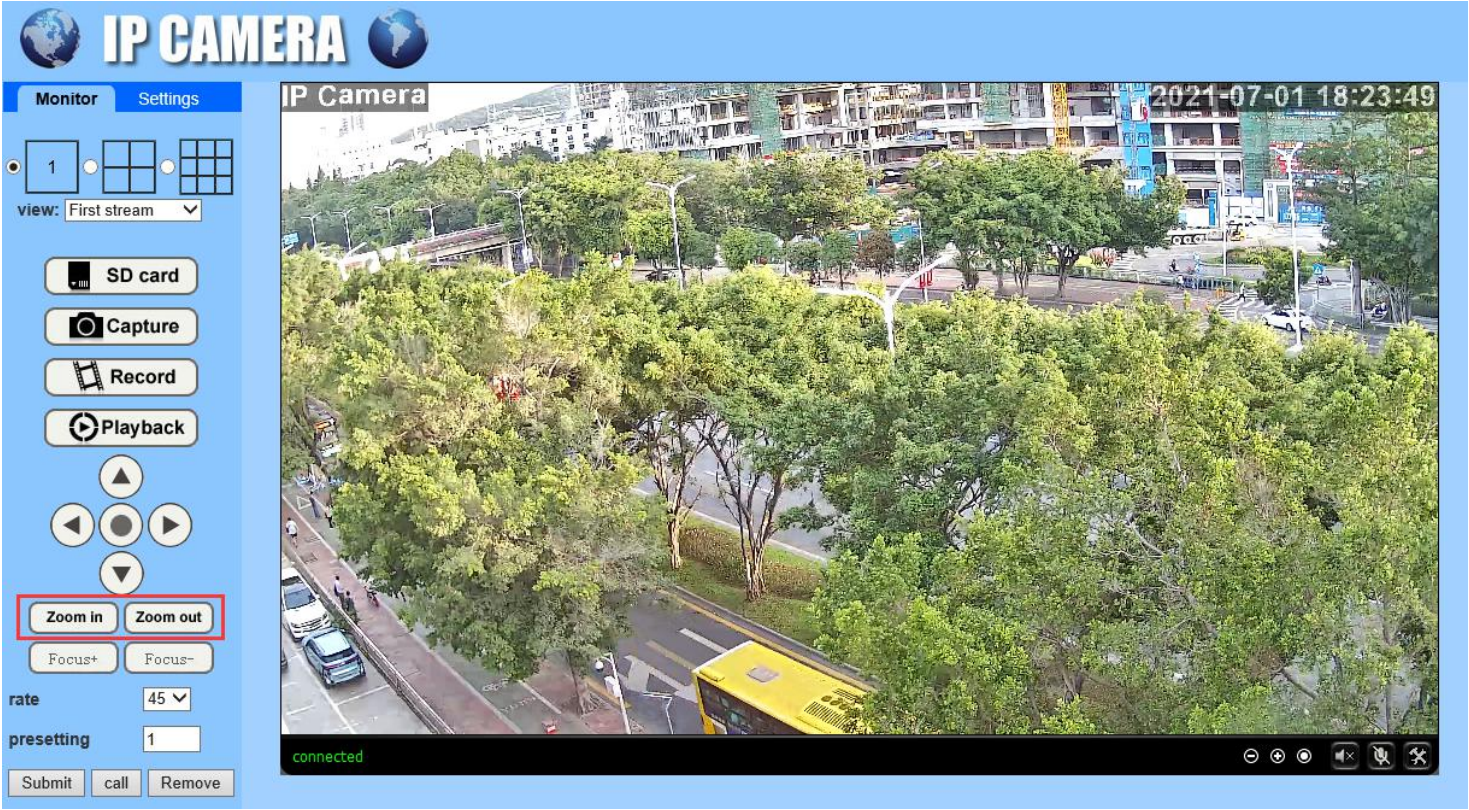


In APP, control the camera rotation by sliding the phone screen.

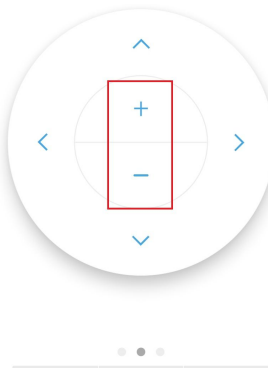


Zoom Control

Click "Zoom in" button, image will be magnified, click "Zoom out" button image will be minified, click "Focus in" and "Focus out", the focus can be adjusted manually, as shown below.



APP page.

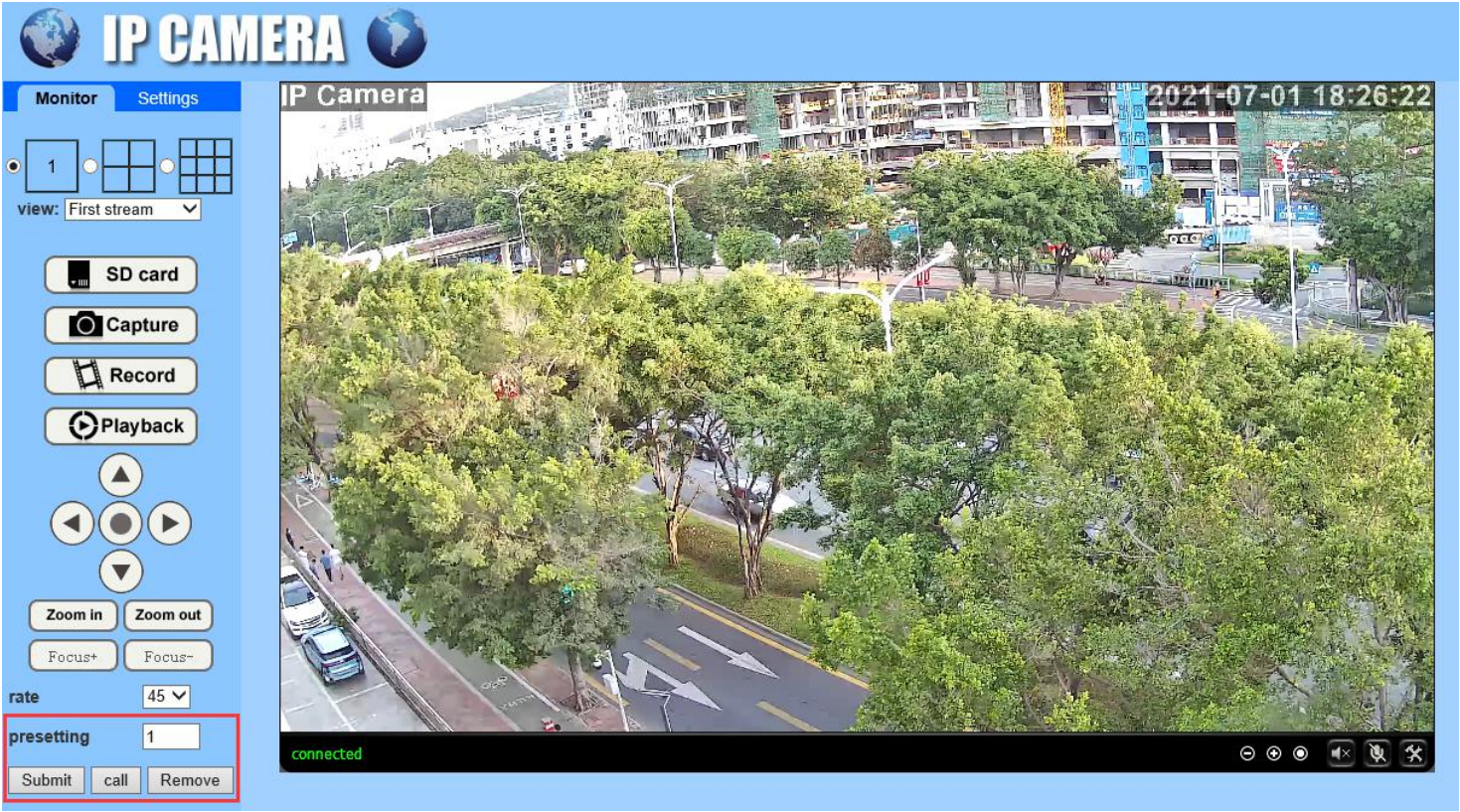


Preset Function

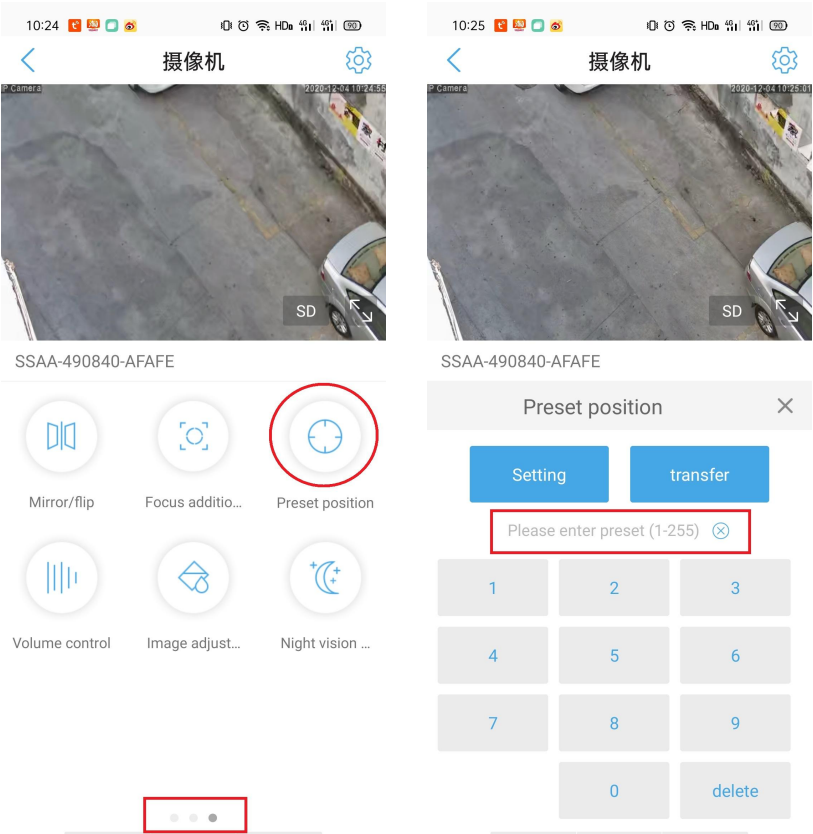
Preset settings: input preset point Number on presetting site, then click "Submit" button, this preset point will be set successfully, camera will record the current location.

Preset call: input preset point Number on presetting site, then click "call" button, this preset point will be called, camera will turn to recorded location.

Delete preset: input preset point Number on presetting site, then click "Remove" button, this preset point will be deleted.



APP page.



The following special presets are only used for the following two 20x optical zoom PTZ dome cameras:



Set cruise

When you have set at least 3 preset points between 1-16, you can call special preset “76” to start cruising, the camera will rotate to the preset points 1-16 that have been recorded until the camera are manually controlled.

Call preset point 76:Start cruising.

Set guard position

Set preset point 86: record the current position of the camera as the guard position. When the camera stops operating one minute, the camera will return to the guard position.

Call preset point 86: turn on the guard position function.

Call preset point 87: turn off the guard position function.

Humanoid tracking

Call preset point 66: turn on the humanoid tracking.

Call preset point 68: turn off the humanoid tracking.

When you call the “66” preset point to start humanoid tracking, the camera will record the current position as the guard point. When there is 15 seconds after the no pan-tilt operation or tracking ends, the camera will return to the guard point position.

When using humanoid tracking, you can choose lens zoom or lens not zoom.

Call preset point 69 :turn on the lens zoom.

Call preset point 70: turn off the lens zoom.

Infrared light board control

Call preset point 131: The infrared light board is always on and the image is black and white night vision.

Call preset point 132: The infrared light board is always off and the image is in color.

Call preset point 133: The default work module, infrared light board and image automatically switch according to the day or night environment .

Others

Call preset point 91: PT re-checks itself and returns to the initial position.

Call preset point 92: The PT to the initial position, the PT data is restored to the default value.

Call preset point 210: Delete all preset point.