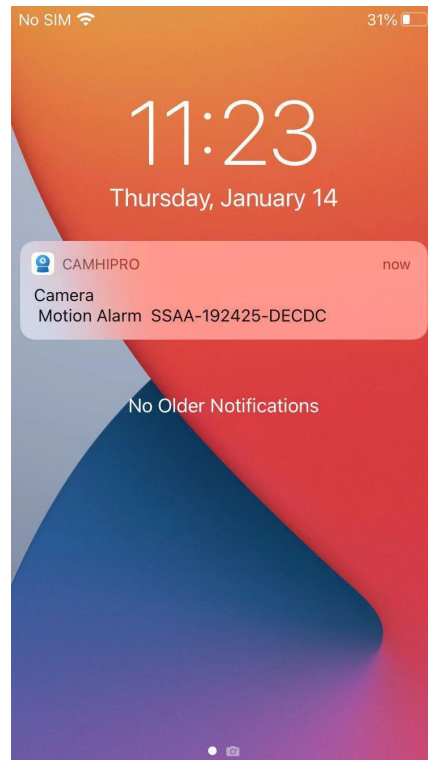


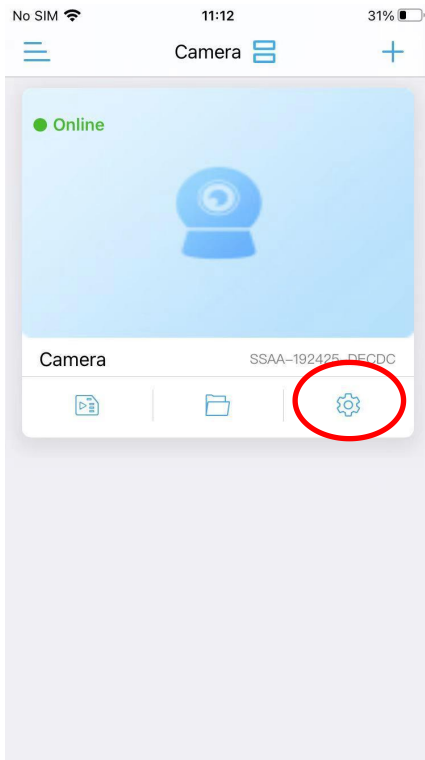
How to use the alarm

APP message push

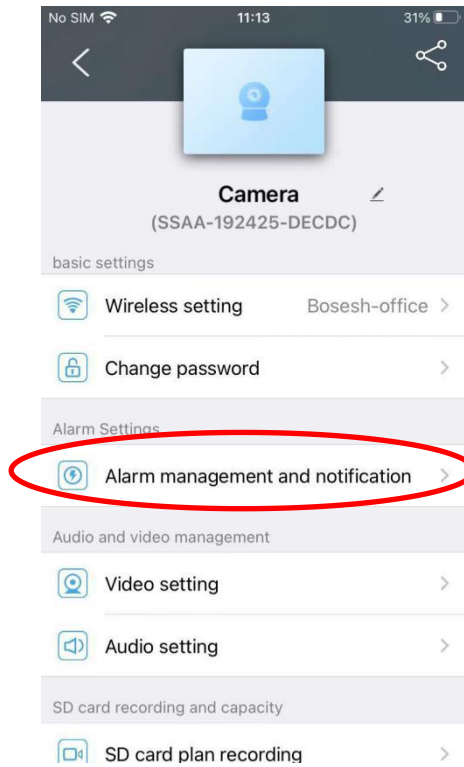
When the camera triggers an alarm, the APP will send an alarm message to you, such as the picture below:



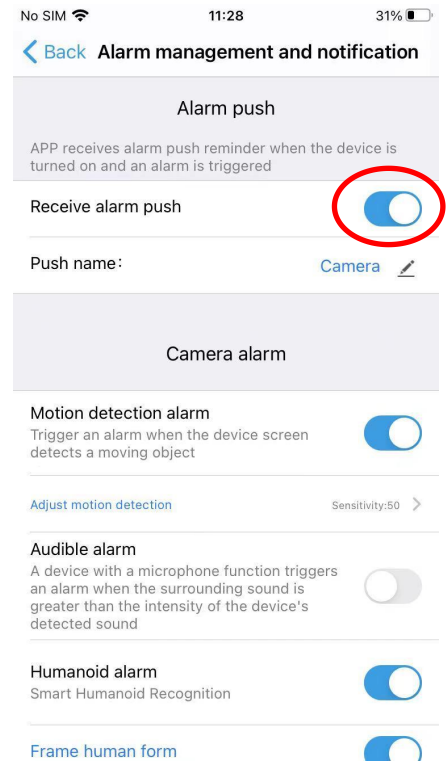
If you want to enable the push function, please follow the steps below:



Click "Setting" icon button



Click "Alarm management and notification"



Open "Receive alarm push" button

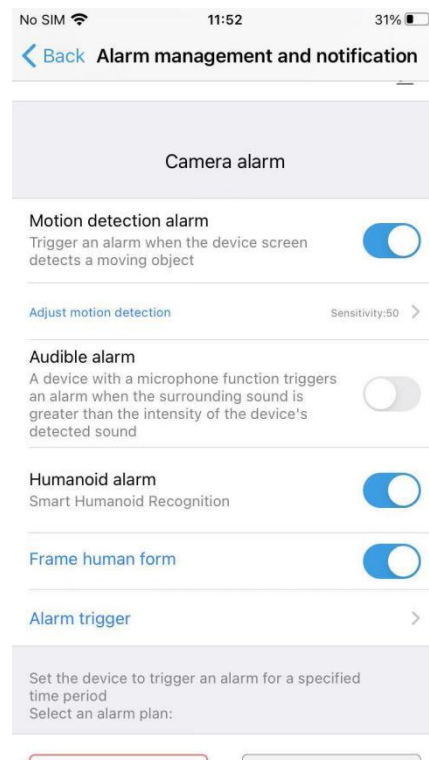
You can customize the push name, if the push function does not work, please check the following items:

1. Please download the latest "CamHiPro" application through Google Play Store/Apple App Store, install the correct version in the corresponding country to ensure the push work.
2. Please allow the APP to use the push function when installing the APP, or allow the APP to use the push function in the mobile push function page.
3. Confirm that the camera has the correct alarm settings and has triggered the alarm, please refer to the following content to check it

Set camera alarm

The camera supports motion detection alarm, Audible alarm and humanoid detection alarm (some cameras may not support humanoid detection alarm), most

cameras default to enable motion detection alarm + humanoid detection alarm(linked mode), as shown below:



Motion detection alarm

When an object moves in the monitoring area, the camera will trigger an alarm. Motion detection may generate a lot of alarms, you can reduce false alarms by setting the trigger area and sensitivity.

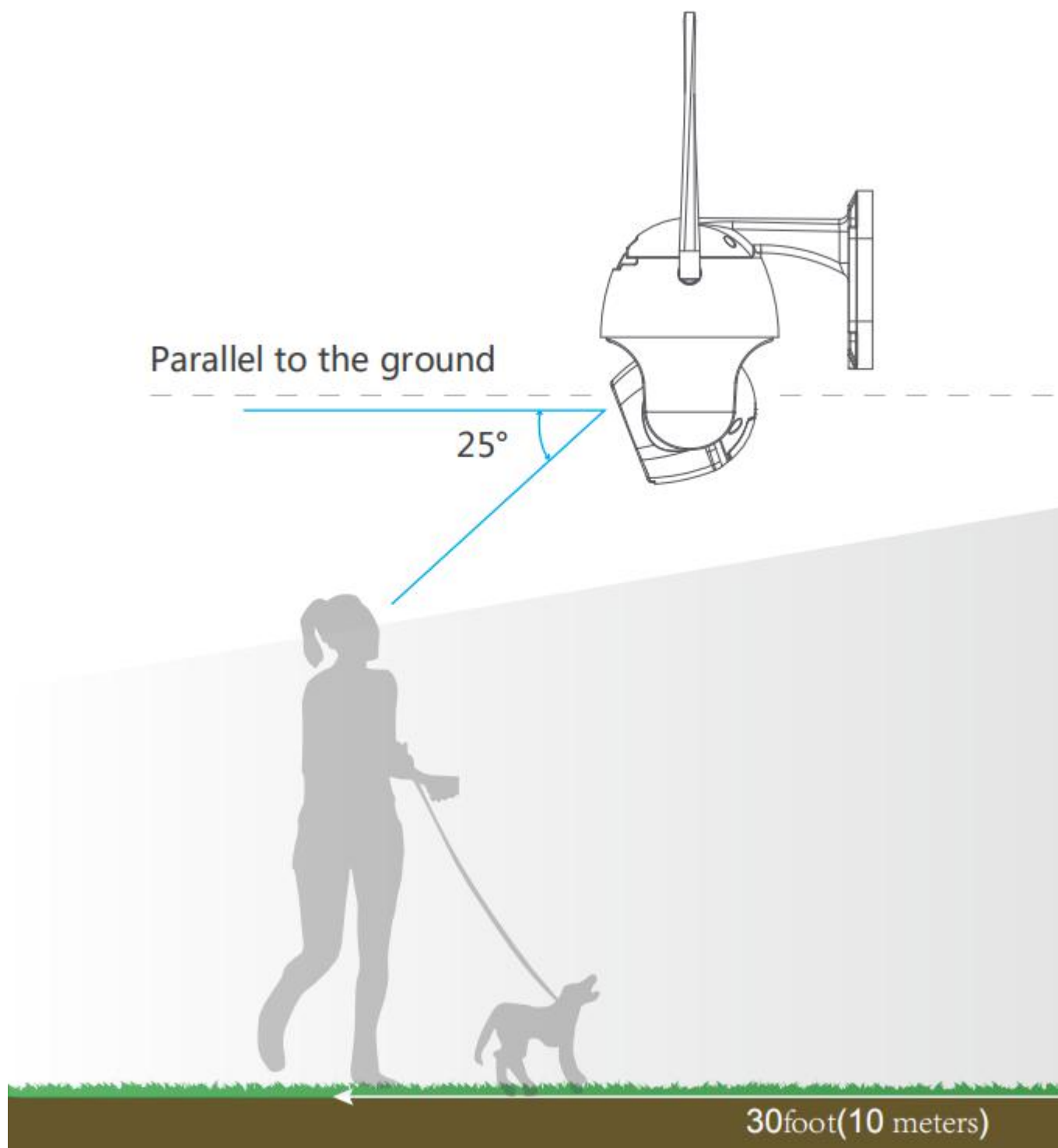
Audible alarm

When the camera detects nearby sound, the camera will trigger an alarm, you can set the value of the detected sound, it is not recommended to use sound detection alarm in outdoor or noisy environments, sound detection alarm and alarm action - "Issues a siren" cannot be working at the same time.

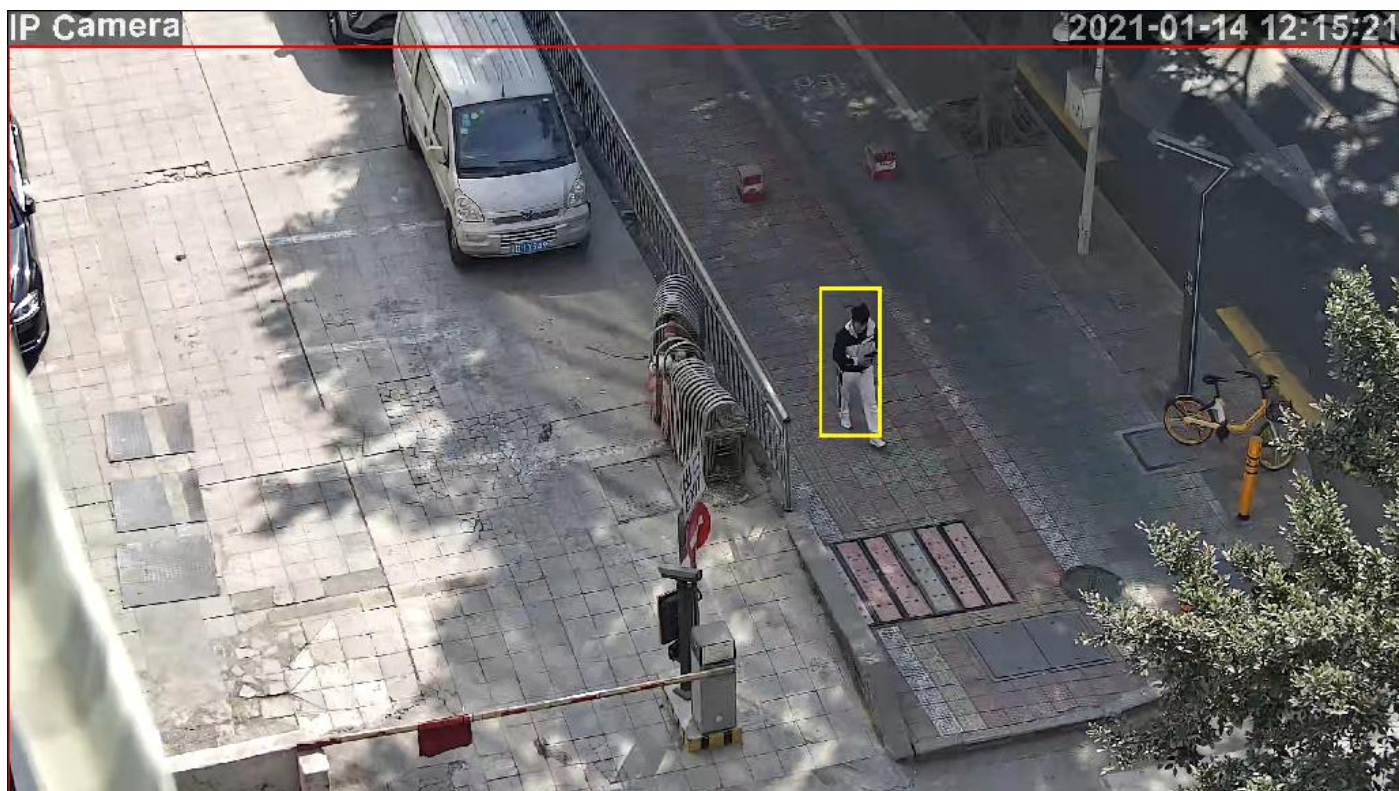
Humanoid alarm

When the camera detects a humanoid object, the camera will trigger an alarm. Humanoid detection requires that the entire human body can be seen, and object should not be too close or far away from the camera. The best distance is as shown

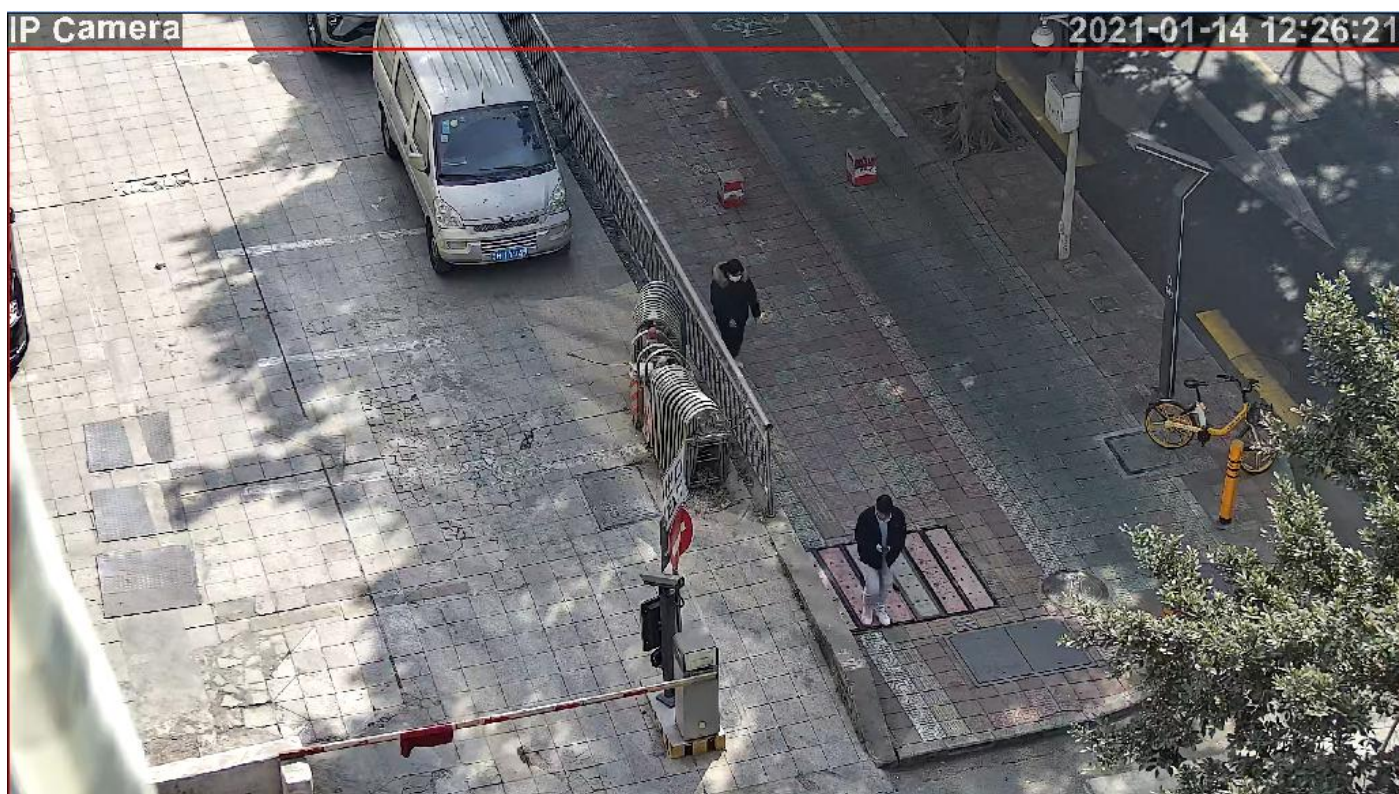
below:



You can choose whether to open the "Frame human form", the effect is as follows:



Open the "Frame human form"



close the "Frame human form"

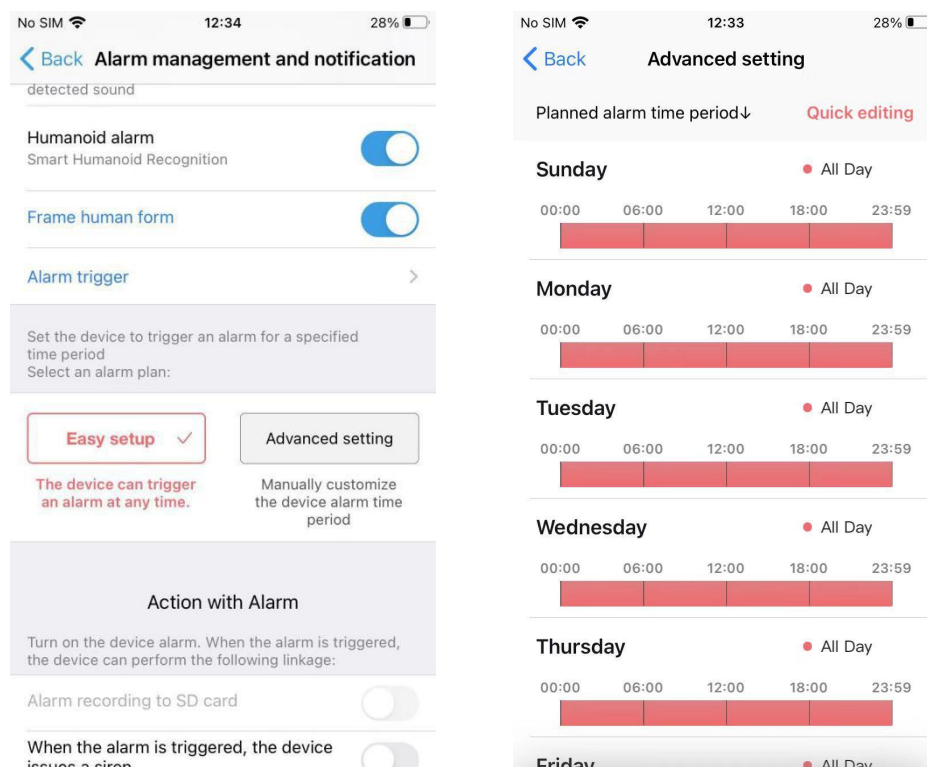
In humanoid detection, you can choose two alarm trigger modes "Alone trigger" or "linkage trigger", if you choose "linkage trigger", the camera will only trigger an alarm when Motion detection alarm and Humanoid alarm are working at the same

time.

Please note that at night, due to the lack of light, Humanoid detection will not be as effective as daytime.

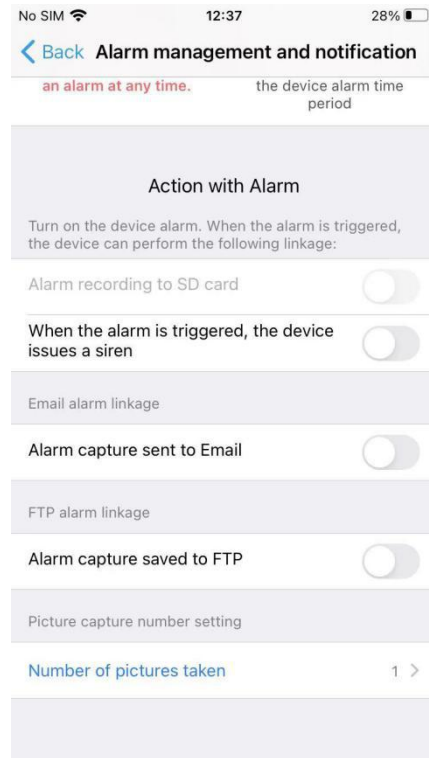
Set alarm time

You can choose "Easy setup" to work on all days, or "Advanced setting" to customize the alarm time.



Action with Alarm

The camera performs an alarm action when camera triggered an alarm, such as "Alarm recording to SD card", "issues a siren", "Alarm capture sent to Email" and "Alarm capture saved to FTP", you must open and complete the configuration to make these functions work, as shown below:

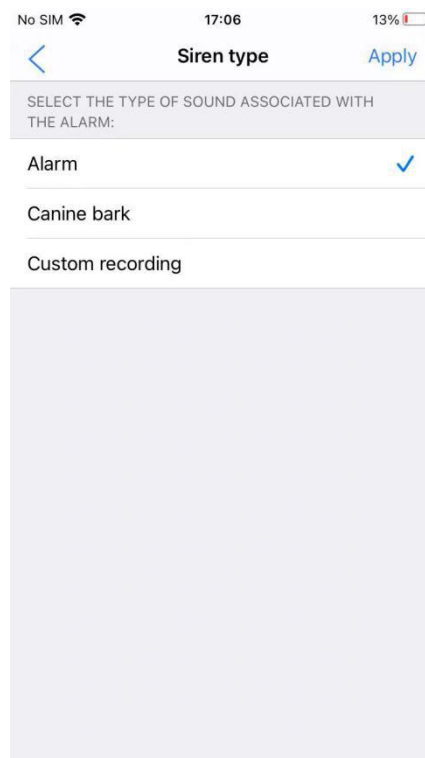
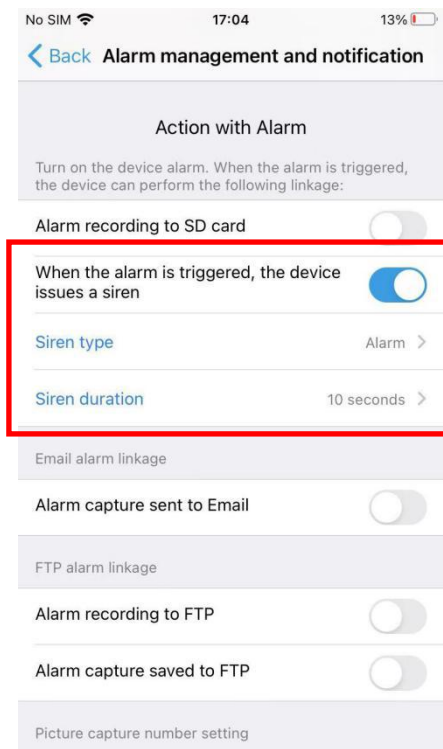


Alarm recording to SD card

When the camera triggered an alarm, camera record the video to the SD card, to use this function, you need to install the SD card to the camera or the camera has built-in SD card, and please make sure SD card have good quality, otherwise it will fail to record and even cause the camera to crash.

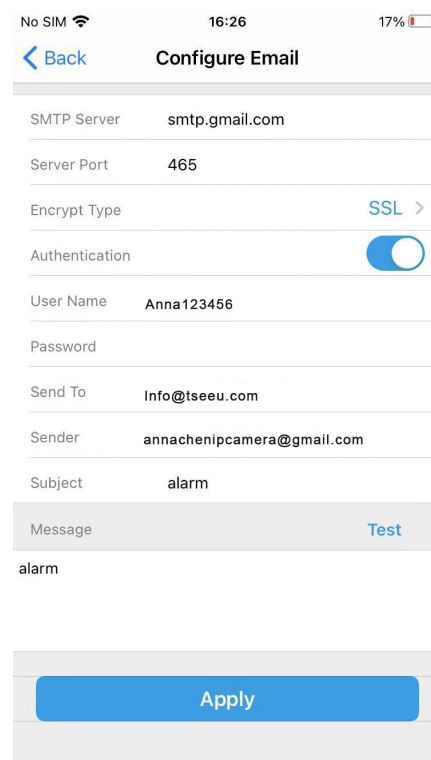
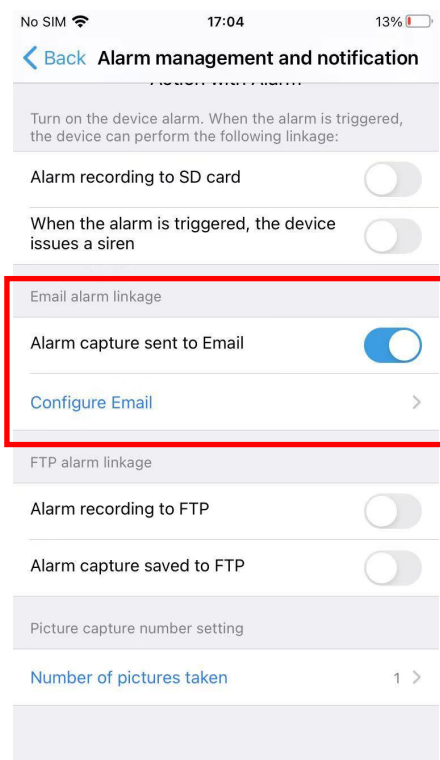
Issues a siren

When the camera triggered an alarm, the camera's speaker will play a sound (the camera's built-in speaker is required), you can choose the type of sound or even a custom sound, and you can set the siren duration, issues a siren and "Audible alarm" cannot be working at the same time.



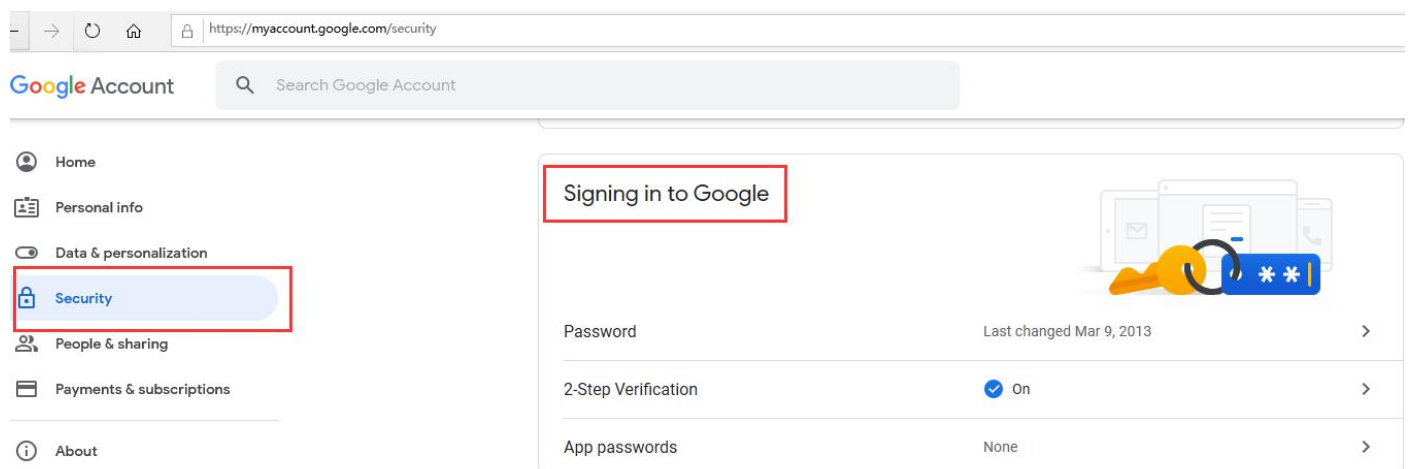
Alarm capture sent to Email

When the camera triggered an alarm, the camera will send a captured picture to the designated mailbox, you must complete the Email configuration before you use this function, as shown below:



Each mailbox has a different "SMTP Server", "Server port" and "Encrypt Type", you may need to consult your mail service provider to get this information, when the configuration is complete, you can click the "Test" button to check whether the configuration is correct, if the configuration is correct, you will receive a test email in your receiving mailbox, **please note that some mailboxes do not support third-party applications to use the mailbox password, such as Gmail, you cannot directly use Gmail password to fill in the email configuration page, you need to apply for a Gmail "App passwords" as the password, the steps of open Gmail App passwords as follows:**

Log in to your gmail account, on the "Security"- "Signing in to Google" page, you must enable the "2-Step-Verification" option first, then you can see the "App passwords" option, click it.



Then select "Mail" and "Windows Computer" after completing the verification , click "GENERATE".

← App passwords

App passwords let you sign in to your Google Account from apps on devices that don't support 2-Step Verification. You'll only need to enter it once so you don't need to remember it. [Learn more](#)

You don't have any app passwords.

Select the app and device you want to generate the app password for.

Mail

▼ Windows Computer ▼

GENERATE

Now you will get an App passwords, use it as a password to fill in the mailbox configuration page.

Generated app password

Your app password for Windows Computer

uatp svkc tjcy dqgi

How to use it

1. Open the "Mail" app.
2. Open the "Settings" menu.
3. Select "Accounts" and then select your Google Account.
4. Replace your password with the 16-character password shown above.

Just like your normal password, this app password grants complete access to your Google Account. You won't need to remember it, so don't write it down or share it with anyone.

[Learn more](#)

DONE

Add your Google account

Enter the information below to connect to your Google account.

Email address

securesally@gmail.com

Password

••••••••

☐ Include your Google contacts and calendars

If you don't know how to set up on your email, I suggest you use Gmail and refer to the above content for configuration.

Alarm capture saved to FTP

When the camera triggered an alarm, the camera uploads pictures to the FTP server, if the camera has installed SD card, you can choose to upload the video to the FTP server, if you want to use this function, you must own an FTP server and know the "Servers address", "Servers port" and account, when you finish the configuration, please click "Test FTP Setting" to check whether the configuration is correct.

